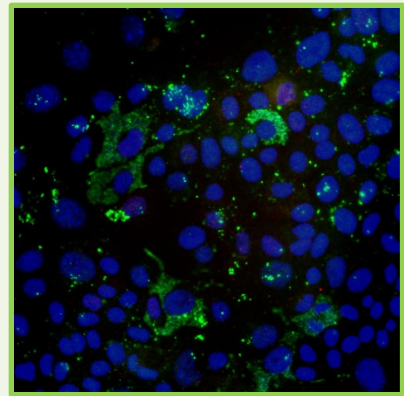
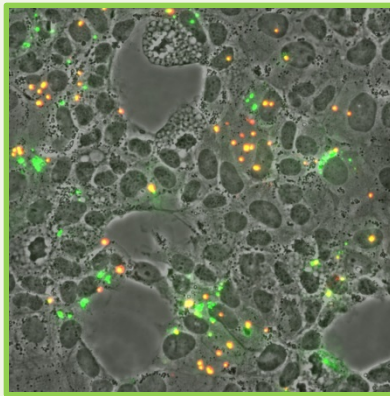
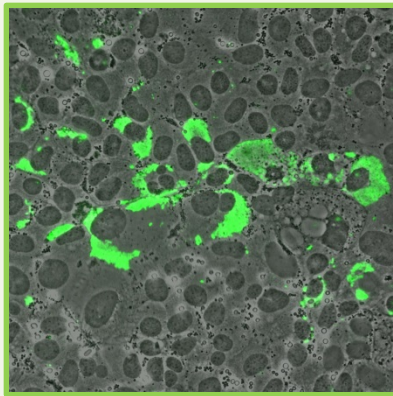


Graduate Program in Genetics

Stony Brook University  College of Arts & Sciences

Doctoral Dissertation Defense

Francisella tularensis:
Interactions with Hepatocytes and
Pathways for the Acquisition of Iron



Cindy Thomas-Charles

Advisor: Dr. Martha Furie

Wednesday, November 20, 2013 ♦ 2:00pm
Life Sciences Seminar Room 038

Stony Brook University ♦ Cold Spring Harbor Laboratory ♦ Brookhaven National Laboratory